

Cover and Page 8, November 8, 2009

TCC ADVANCED RENDERING CLASS



Michelle Alderman's second-place entry in the TCC interior design competition stressed comfort and entertaining.

COURTESY PHOTOS

3 city women students sweep

THE TOP THREE PLACE-WINNERS received iPod's from Ruby Ainslie and Ross Millard for the residential builder the Ainslie Group.

By Vicki L. Friedman
The Virginian-Pilot

Brenda Davis, Michelle Alderman and Heather Dickinson are designing women. The three members in Tide-

water Community College's advanced rendering class teamed with residential builder the Ainslie Group to redesign the interiors of two new units off Indian River Road in Virginia Beach.

Sixteen students from professor Alex Reichardt's class took part in the competition with the top three winners receiving an iPod. Davis, Alderman and Dickinson – all from Chesapeake – finished 1-2-3, respectively.

The projects included floor plan, great room and dining

See DESIGN, Page 8



from the editor | *Designs on a new career? TCC might be place to start*

DEVONHUBBARD SORLIE, 222-5202, devon.sorlie@pilotonline.com

If you're anything like me, you lay awake at night thinking what other career choices you might choose if your job ended like those at the Franklin paper mill and the Ford truck plant in Norfolk.

For me, being a dolphin-trainer comes to mind, but then reality hits.

Chesapeake has the first step in looking for a new career with its Tidewater

Community College campus.

Vicki Friedman's Page 1 story is about TCC students – some who are not the conventional right-out-of-high-school students – who won an interior design contest.

That reminded me of a time when I wanted to design office furniture, especially after seeing that Seinfeld episode in which George had a desk with a built-in cot underneath for afternoon naps.

For my home office, I'd like a weight-controlled panel in front of my computer monitor that lowers the cat out of the way whenever he plants himself in front of it.

During these times of forced job changes, a talent that needs a little polishing could re-launch a business or career.

But TCC's excellent motto says it best: "From here, go anywhere."

DESIGN

Continued from Page 1

room perspectives and a scale model of the kitchen and eat-in area in color.

Judging was based on originality, presentation and livability with artistic expression also considered.

As far as detail, nobody beat Davis, who had a box of Honey Nut Cheerios sitting on the table and lettuce and other greens in one sink.

"I love designing," Davis said. "I've had it in me since I was a little girl.

Kitchens sell houses and any homebuyer would love the mecca Davis created. The students were encouraged to "be as creative as you want," and Davis followed suit.

She removed walls to enlarge the kitchen, added a mud room and pantry, and included every convenience a young family would enjoy, including a wine cooler and pet door.

She created a nook for a desk in the kitchen, which is becoming an increasingly attractive feature for homebuyers.

She stayed with brown, blues and greens, selections that would appeal to a modern family.

The two-leveled island in her kitchen was designed with children in mind.

"Kids love to join in the cooking," she said. The lower height to one section of the island enables kids to pitch in with their own mixing bowl.

Alderman's design stressed comfort and entertaining. The great room has a suede look with soft green fabric for the couches and bar stools that clean up easily.

A water feature on one wall is an eye-catching addition. An outdoor kitchen was her own improvisation. The open design allows the family to interact easily with guests.

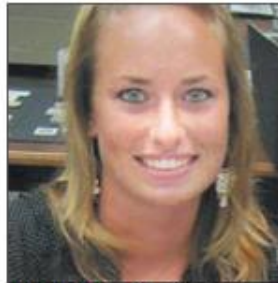
Dickinson drew on her experience of having purchased new-construction homes and let that guide her design.

She chose durable furniture and stressed function



COURTESY PHOTOS

FIRST PLACE Nobody beat Brenda Davis' entry for detail. She had a box of Honey Nut Cheerios sitting on the kitchen table and lettuce and other greens in one sink.



SECOND PLACE Michelle Alderman's design stressed comfort and entertaining. The great room has a suede look with soft green fabric for the couches.



THIRD PLACE Heather Dickinson chose durable furniture and stressed function. Maple cabinetry with a coffee accent gives the kitchen a regal look.

in the kitchen. Maple cabinetry with a coffee accent gives her kitchen a regal look.

Window treatments similar to roman shades but made from a bamboo fabric allow the homeowner to have light at times, privacy at others.

A built-in banquette with nearby shelves ensures toys and books are within easy reach but out of sight.

An oak mahogany table is the centerpiece of a dining room that is two-toned with red and coffee cream walls.

None of the women could estimate the hours they put into their projects for Reich-

ard's class.

"Forever," Alderman said.

Davis and Dickinson hope to make careers in interior design. Alderman works with her family in cabinetry and hasn't decided how far she will pursue design.

Each woman made it a mission to find the perfect samples for counters, floors and fabric. They pored over decorating books to seek the ideal fixtures.

And then they let their imaginations fly.

Vicki L. Friedman, 222-5218 or Vicki.Friedman@pilotonline.com

